



## KORO® BY IMANTS

# TopDrain 1000

The TopDrain 1000 provides a complete one pass surface drainage system that saves labour and material with faster processing times and less surface contamination. Designed for sports fields and golf course fairways, the unique multifunctional machine trenches, removes spoil, injects sand and re-compacts all in one operation. The sand grid created by this process is intended to complement existing drainage systems.

### Specification

Working width	1.00m
Overall width	2.24m
Machine height (machine on legs)	2.52m * rear wheels lowered
Height of elevator (blades on ground)	1.70m
Height of hopper (blades on ground)	1.85m
Machine length	4.99m
Working depth	260mm (maximum)
Weight (approx)	2,500kgs (unladen)
Number of cutting discs	2
Spacing of discs	1.00m
Thickness of digging blades	4cm
Power requirement	70hp – 85hp maximum
Tractor requirements	540 PTO / 6 spline PTO 6 hyd valves – female fittings on tractor required
Operating speed	0 – 3 kph
Options	Road lights



Campey supply market leading, innovative turf care machinery worldwide, we're continually researching new techniques and refining existing practices to help turf care professionals achieve perfection.

Distributed by:



Hong Kong | Singapore | Malaysia | Australia

Email: [info@centaur-asiapacific.com](mailto:info@centaur-asiapacific.com)

Website: [www.centaur-asiapacific.com](http://www.centaur-asiapacific.com)

# KORO

**Campey**  
TURF CARE SYSTEMS  
QUALITY GROUND CARE EQUIPMENT

OFFICIAL  
**KORO**  
DISTRIBUTOR  
campeyturfcare.com



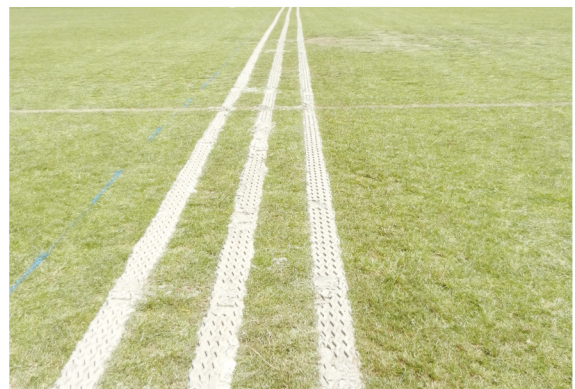
**KORO® BY IMANTS**

## TopDrain 1500

The TopDrain 1500 provides a complete one pass surface drainage system that saves labour and material with faster processing times and less surface contamination. Designed for sports fields and golf course fairways, the unique multifunctional machine trenches, removes spoil, injects sand and re-compacts all in one operation. The sand grid created by this process is intended to complement existing drainage systems.

### Specification

Working width / Overall width	1.50m / 2.75cm
Working depth	15 - 225mm
Number of cutting blades	3
Spacing of blades	50cm
Thickness of blades	40mm
Weight (approx)	3300kg (unladen)
Power requirement	95hp Creep gear
Tractor requirements	540 PTO. 2 x double, 1 x single spool, 12v plug
Operating speed	0 - 1.8mph (0 - 3kph)
Options	Extended side conveyor. Hopper vibrator



Campey supply market leading, innovative turf care machinery worldwide, we're continually researching new techniques and refining existing practices to help turf care professionals achieve perfection.

Distributed by:

 **CENTAUR**  
ASIA PACIFIC

Hong Kong | Singapore | Malaysia | Australia

Email: [info@centaur-asiapacific.com](mailto:info@centaur-asiapacific.com)

Website: [www.centaur-asiapacific.com](http://www.centaur-asiapacific.com)