



EXCLUSIVE MACHINERY



You have not touched the surface yet

We have put together a collection of digital products featuring photos, videos and specifications about the latest machinery available from Campey Turf Care Systems. This is also the best place to find the latest news from ourselves and the Sports Turf Care Industry.

Website - www.campeyturfcare.com

New and used product information, specifications, photographs, videos. Masses of industry information, news and some fantastic pitch renovation videos and much more.

Website - www.tinesdirect.com

Our online shop for all your replacement tine needs.

Social Media

We use numerous social channels to help keep you instantly informed with news, information, photography, and video from Campeys and the turf care industry. We try to share the latest industry innovations and trends to keep you ahead of the game.

To find out more about the Campey Turf Care social presence please visit us at any of these channels.

 [CampeyTurfCare](#)

 [CampeySportsTurfMachinery](#)

 [CampeyMachinery](#)

 [CampeyTurfCare](#)



INTRODUCTION

Honest, practical turf care experts

Campey Turf Care Systems has always provided customers with honest, practical turf care advice. For almost four decades, the company has introduced industry-defining machinery that has changed the way natural and hybrid pitches are maintained.

Seeking ways to innovate turf maintenance, such as the KORO® FIELDTOPMAKER®, and finding solutions to common issues every turf professional faces is a vital part of the Campey operation. Whether it's tackling localised compaction at any time with the Air2G2 336, aerating an entire pitch with an Imants ShockWave, getting a 96% germination rate with a Vredo Overseeder or the perfect spread with a Dakota Turf Tender, Campey has strived to provide an industry-leading solution for the needs of groundsmen at every level of sport.

Contents

Foley Air	04
Alltrec	08
CAMPEY™	12
Dakota	42
Imants	68
KORO®	82
Martin Lishman	96
Omarv	98
Vredo	102



Air2G2

Inject pressurised air 12-inches beneath the surface to increase space and promote faster drainage and root development



Aerate anytime of the year with no disruption to play

The Multi-Award Winning Air2G2

The Air2G2 336 has set the standard for self-propelled pedestrian aerators. Using three probes to laterally inject pressurised air up to 12 inches below the surface, this machine is perfect for goalmouths, greens and any heavy wear areas and as part of your regular aeration programme. The lateral blasts of air loosen compacted soil immediately with no disruption to the surface, allowing play to continue straight away, with continued use creating surfaces that are healthy, firm and always ready for play.

The Air2G2 336 Helps With:

- Compaction Relief: Fractures hardpan layers without disruption to roots or playing surfaces
- Porosity Increased: Lateral air injections increase pore space, promote faster drainage and root development
- Respiration Enhanced: Forces oxygen in and pushes CO2 and other anaerobic gases out for rootzone gas exchange

Long term Benefits of Air2G2 336:

- Immediately relieves soil compaction
- No downtime or turf disruption—lawns, sports fields and golf courses are ready to use right after treatment
- Easy to operate, easy to train your crew to use
- No post-application cleanup necessary!
- Instantly breaks through compacted soil, brings air to suffocating roots
- Quickly improves water drainage
- Encourages deeper root growth

Specifications & Features:

- Self-propelled aeration machine on a three-wheel platform with smooth, wide flotation tires
- Powered by a Kohler Command Pro 19 horsepower engine
- Hydrostatic drive-axle that is actuated by the steering handlebar
- Pneumatic system is powered by an Ingersoll Rand two-stage air compressor
- Three probes reach up to 12-inches deep into the soil
- Pressurised air is pushed out laterally at a diameter of 6 to 9-feet



Results that simply speak for themselves

The Air2G2 has achieved very impressive independent test results backed up with numerous awards and industry recognition for its game changing innovation.

Specification

Working width	180cm
Overall dimensions of unit	205cm (l) x 150cm (w) x 130cm (h)
Working depth (probe / tine)	17.5cm – standard tines 23cm – standard tines 30cm – standard tines 15.25cm – optional tines
Weight (approx)	450kgs
Fuel tank capacity	19ltrs
Engine	Kholer 19hp petrol engine
Compressor	Ingersol Rand two stage, 75.71ltrs capacity

85%

More Air Pores

2200%

Improved Infiltration

21%

Reduced Surface Hardness





- Water porosity was reduced from 32.62% to 28.59% in 2 months (2 operations), to below the recommended rate of 30%
- Initial air to water balance in soil was 1: 2.76
- After one operation 36.7% more air spaces
- After two operations 85% more air spaces
- Final air to water balance in soil was 1: 1.31 - Almost textbook figures!

- Infiltration rates increased from 0.69"/hr to 15.77"/hr in just two months (after 2 operations). An increase of 2,200%
- Air porosity was increased from 11.8% to 21.3% in two months (2 operations). An increase of 46%

 STMA 2015 Innovation Award

 HSBC 2016 Golf Business Forum Innovation Award

Courtesy of Brae Burn Country Club, KS. USA

AIR 2G2

Air2hp



- Ideal for sand bunkers, small spaces, hard to reach places
- Great for the base of trees, around tree roots, in flower beds and lawns
- Quickly spot treat areas of standing water

How It Works

- Single probe aerator fractures soil profile
- Hand operated air valve
- Horizontal air injection, below the surface at a diameter of up to 3ft (0.9m)

What it Does

- Injects air into the soil column, shooting oxygen to roots and fracturing compacted soil for air and water movement
- Increases drainage
- Increases soil porosity
- External air compressor required for use

Campey
TURF CARE SYSTEMS

QUALITY GROUND CARE EQUIPMENT

OFFICIAL

ALLTREC
100% ELECTRIC

DISTRIBUTOR



Available Exclusively From Campey Turf Care Systems

ALLTREC

Alltrec 4810T 100% Electric Tool Carrier

The Alltrec Tool Carrier is a versatile machine that can be used with several different attachments, making it perfect for cutting grass, controlling weeds, brushing or cleaning. It has no CO₂-emission and distinguishes itself through the minimal sound it produces. The large action-radius, low operation and maintenance costs make the tool carrier particularly suitable for use in multi-use sports complexes, urban areas, campsites, holiday resorts and theme parks.



100% Electric



Low Operating Costs



Low Noise



Low Maintenance



Zero Emission





The Tool Carrier is 100% electric and produces no CO2 emissions during operation

DRIVE

Drive type	Electric
Traction system	Front-wheel drive
Speed	20km/h (12mph) forward / 10km/h (6mph) reverse

BATTERY

Voltage	48VDC
Battery technology	LifePO4
Capacity	20kWh and optional 30kWh
Charging	Onboard charger (4-8 hours)

OPERATION AND COMFORT

Operating	Right-side mounted control on armrest
Seat	Suspension type and fully adjustable
Steering column	Adjustable steering column
Display	Colour display in armrest
Work-lights	Optional LED work-lights and LED rotating beacon
Road-lights	Optional
Canopy	Optional

TYRES, BRAKES AND STEERING SYSTEM

Standard tyres	Front 23 x 9.5-12 Rear 24 x 12.00 – 12
Service brake	Hydraulic brakes front
Parking brake	Electromagnetic front axle
Steering	Rear-wheel steering

DIMENSIONS AND WEIGHT

Length [L]	2280mm
Wheelbase [W]	1500mm
Height [H] / [H2]	2060mm / 2200mm
Width [S]	1000mm
Track width [B]	1100 – 1200mm (depending on choice of tyres)
Plateau height	1150mm
Weight	1015kg (basic battery) 11250kg (professional battery)

LIFTING DEVICE ATTACHMENTS

Lifting capacity	500kg on the ballend
Lifting device	Hydraulic, double acting
PTO	Electric power supply, maximum 8kW frontside (optional rear)
Hydraulics	Optional 1x DW function frontside 4l/min – 180bar





Innovative machinery designed by turf care experts for turf care experts

The Campey™ innovative turf care products are developed by leading turf care professionals responsible for introducing revolutionary techniques to the turf care industry.



HOME OF

ORGE
RK

FAN ALL
FAN ALL

Nike

Continental

Campfire
by the fire
UNRAKE



CAMPEY™

Speedresser™ 18H

The Campey™ SPEEDRESSER™ 18H is a bulk drop-spreader designed to handle all topdressing materials. The 4 flotation tyres on a pivoting axle minimise the risk of turf damage and compaction. The high work rate enables the spreading of dressings up to depths of 2mm - 75mm in one pass, making it ideal for golf courses and sports fields use, both with private clubs, local authorities and contractors. The SPEEDRESSER™ 18H requires a tractor of at least 30hp and is driven hydraulically from the tractor via an agitator and twin rollers.

Specification

Spreading width	1.80m
Overall width	2.10m
Body Length	3.00m (2.00m with drawbar removed)
Hopper Capacity	2.25m ³ (3.25m ³ with hopper extension)
Loading height	1.40m (1.75m with hopper extension) (69")
Gross weight	4,000kg (5,500kg with hopper extension)
Weight (unladen)	960kg (1050kg with hopper extension)
Tractor requirement	50hp +. Spool valve. Pick up hitch/drawbar
Tyres	4 x Ultra Trac 26.5 x 14 x 12
Operating speed	Up to 12mph (18kph)



CAMPEY™

Speedresser™ 24H

The Campey™ SPEEDRESSER™ 24H is a 2.4m wide drop-spreader designed to handle all topdressing material. The four flotation tyres on a pivoting axle minimise the risk of turf damage and compaction. The high work rate enables the spreading of dressings up to depths of 2mm - 75mm in one pass, making it ideal for golf courses and sports fields use, both with private clubs, local authorities and contractors. The SPEEDRESSER™ 24H requires a tractor of at least 75hp and is PTO driven via a heavy-duty transmission to an agitator and twin rollers. The twin rollers are now hydraulically adjustable against a pre-set stop to alter spreading rate applications.

Specification

Spreading width	2.40m
Overall width	2.65m
Body Length	2.30m
Hopper Capacity	5.75m ³
Loading height	2.00m
Gross weight	9,250kgs
Weight (unladen)	2,250kgs
Tractor requirement	75ph +. Pick up hitch or clevis drawbar & 2 spool valves
Tyres	4 x Flotation tyres - 15.5 x 14ply
Operating speed	Up to 12mph (18kph)
Options	Extra agitator recommended for fibre sand



CAMPEY™

Sportsfield Harrow

The CAMPEY™ Sportsfield Harrow is a tractor mounted implement for aggressive surface grooming. It can be used on turf, for standing prone grasses, dragging out dead or dying organic matter, or creating a tilth prior to seeding. The Campey™ Sportsfield Harrow also has an application for grooming on hard porous surfaces and is also ideal for gravel paths where regular use will prevent the accumulation of moss and algae. This 3-point linkage model can be mounted on all compact tractors of around 25hp and above.

Specification

Working width	2.5m
Spacing of tines	50mm
Diameter of tines	6mm
No of tines	33 double prong tines, interpitched
Weight	120kg
Power requirements	25hp
Tractor requirements	Cat 1, 3 - point linkage







CAMPEY™

UNIRAKE™

The Campey™ UNIRAKE™ is designed for and by leading groundsmen to accurately maintain natural and synthetic grass including hybrid surfaces. The Campey™ UNIRAKE™ offers high intensity grooming that can be calibrated in its severity.

“ We looked to the UniRake to improve our maintenance operation on the Desso constructed pitches and to take some of the weaker grasses out. This is because the pitches get quite thick before the end of the season, but we also use it during the renovation as well, and It’s been a huge success for us. ”

Andy Jackson,

Head Groundsman, Stoke City Football Club

Specification

Working width	2.0m
Length	1.80m
Number of tines	136
Tine length	1337mm
Weight (approx)	265kgs
Power requirement	25hp +
Options	Brush



CAMPEY™

Uni-Scratch

The Campey™ Uni-Scratch is the ideal solution for those looking for professional and effective maintenance of natural and synthetic grass surface.

The Campey™ Uni-Scratch has been developed to infill or refill when installing or looking after synthetic grass carpets. It can also be used for the final organic matter removal on natural grass hybrid carpet pitches when carrying out annual renovations.

The Uni-Scratch moves on 4 supporting rollers which are adjustable in height to allow the most appropriate working depth. The rotors can be equipped with springs or linear brushes in PPL. Fits on tractors of at least 30HP.

Specification	1500	2200
Tines	3mm / 4mm optional	3mm / 4mm optional
No. of rotor	4	6
No. of springs for each rotor	16	16
Diameter of spring tine	3.2mm	3.2mm
Size	0.90m (h) x 1.55m (w) x 1.00m (d)	0.80m (h) x 2.40m (w) x 1.00m (d)
Weight (approx)	454kgs	700kgs
Working speed	1 - 3mph	1 – 3mph
Power requirement	Minimum of 30hp	Minimum of 50hp
Tractor requirement	540 PTO	540 PTO





CAMPEY
Uni-Scratch
www.campeyusa.com



CAMPEY
Uni-Scratch
www.campeyusa.com



CAMPEY™

Uni-Brush

Campey™ Uni-Brush Front Sweeper has been developed to fit tractors from 18 to 60 Hp. The compact design improves the handling to guarantee a fast and accurate work in any conditions.

The Campey™ Uni-Brush Front Sweeper is equipped with roller brushes, suitable for snow removal, dirt and debris removal on driveways. Extremely versatile for any kind of work, the right tool for cleaning driveways, service areas, parking lots and yards, and snow removal. The gearbox, featuring fully hardened steel gears and ball bearings in oil bath enclosed in a cast-iron housing, and the double-chain secondary transmission reduce maintenance to a simple periodic check of the oil level and brush wear.

Specification

Model	TSPF4 1200	TSPF4 1500
Working width	1.20m	1.50m
Max width	1.31m	1.61m
Max height	0.81m	0.81m
Length without collector	0.92m	0.92m
Length with collector	1.34m	1.34m
Working width 25° turn angle	1.10m	1.37m
Weight	130kgs	160kgs
PTO height	0.33m	0.33m
Ø Brush	0.40m	0.40m
Options	25° Hydraulic Angling Kit Front Loader Interface - model variations Collector Hopper with hydraulic tip function Gully Brush Rear Roller to be used in lieu of caster wheels	

Other model sizes are available upon request.

CAMPEY™

Core Collector

The Campey 'Core Collector' is an accessory that can save you time and labour costs, when core removal is necessary after aeration. As your aerator is operating, the Core Collector picks up, contains & moves the cores to the collar, and when lifted to make the next pass the cores are deposited on the collar. The Core Collector can be mounted in a matter of minutes on walk behind & tractor drawn aerators. Removal is just as simple and can be stored easily with virtually no maintenance required.

Specification

Working width	1.2m
Weight (approx)	32kgs
Available for	Toro Procore 648, Procore 864, Procore 660 John Deere 800, 1000, and 1500
Options	A thin base plate for cores less than ½" Brush





CAMPEY™

Rake O Rotor

The Rake O Rotor is a bi-directional 2-speed rotor allowing for operation in both directions, featuring a 25-degree angle and 28-degree tilt for ease in swaling and ditching. Oscillating gauge wheels lock in a level position for 3 point hitch use for reliable operation, and the dual-motor design delivers 40% more power whilst eliminating the need for outside bearings and chains. The Rake O Rotor also features a floating rotor design and increased durability with carbide teeth, ditch cutters and side shield. The Rake O Rotor can be used on a 3 point hitch or a skid steer hitch system.

Specification

Working width	1.8m (72")
Width	2.0m (80")
Height	0.75m (30")
Weight	500kgs
Drum speed	0-600rpm



CAMPEY™

Groundsmower Trailer

The Campey™ Groundsmower trailer is ideal to move any grounds mower around easily and efficiently. Designed to be towed by any utility vehicle, or tractor. Manual lowering of trailer bed to allow effortlessly loading of the mowers, reducing unnecessary damage to the rollers on the cutting units. Can accommodate up to 2 mowers (depending on size). Equipped with safety bar to keep mower(s) in position when travelling.

Specification

Length	3.65m
Width	1.72m
Weight	185kgs





CAMPEY™

Triple V Brush

The CAMPEY™ Triple V Brush is a tractor mounted implement for brushing in topdressing removing worm casts, standing up grass prior to mowing and general presentation on natural turf.

The Campey™ V Brush is also suitable for use on sand-filled and 3G synthetic pitches for taking out scuffs and footprints, re-distributing infill and promoting a vertical sward. The reversible mounting frame enables the V Brush to be mounted on the rear or front linkage on tractors of 18hp and above. Individual brush sections can easily be replaced when worn.

Specification

Working width	1.8m
Weight	100kgs
Power requirements	18hp
Tractor requirements	Cat 1, 3 point linkage
Options	Yellow Bristles for synthetic



CAMPEY™

Triangle Brush

A tractor mounted Triangle Brush which is ideal for standing up the pile, brushing surface infill to an even level finish and eye-catching presentation.



CAMPEY™

Hand Drag Brush

Heavy-duty hand drag brush for brushing in topdressing, removal of dew and for brushing and levelling hard porous areas, as well as for use on sand filled synthetic surfaces.

CAMPEY™

Front Mounted Brush

for Pedestrian Rotary Mowers



Designed for fitting to Honda, Kaaz
and Lawnflite pedestrian rotary mowers



CAMPEY™

Synthoflex Brush

A 3 point linkage mounted brush suitable for compact tractors of 15hp. The Synthoflex brush is designed for regular use on all artificial surfaces to help stand up the pile and level the rubber crumb. The stiffness of the bristles can be easily adjusted using the plastic stiffening board on the all galvanised / plastic construction unit.

Specification

Working width	1.8m
Transport width	1.80m x 1.00m x 0.20m
Weight	40kgs
Tractor required	15hp

CAMPEY™

Dragmats

The CAMPEY™ Dragmats come in various sizes and are available in heavy-duty reinforced rubber or steel construction. Dragmats are ideal for rubbing-in topdressings and dew and clippings dispersal. Small mats can be hand-pulled, while the wider units are more suited to towing or mounting on the optional 3-point frame. Available in four different widths and two different thicknesses (rubber) for various handling applications and tasks.

Specification

Easy Dragmat type	Approx sizes (m) W x L		
Rubber Mats 20mm thick	1.2m x 1.8m	1.8m x 1.8m	2.4m x 1.8m
Rubber Mats 12mm thick	1.2m x 1.8m	1.8m x 1.8m	2.4m x 1.8m
Steel Mats 12mm thick	0.9m x 1.2m	1.8m x 1.2m	2.4m x 1.2m
Options	Handle bar	N/A	N/A
		3 - point mounting frame	



CAMPEY™

LineMarker

LM3010 / LM3012

The CAMPEY™ LM3010 / LM3012 is a simple, durable and easy to operate liquid transfer line marker. Marking material is transferred from the 30ltr hopper to the 10cm or 12cm wide marking wheel by a grooved rubber roller, giving even and accurate lines with the front roller, allowing marking up to the flag or post. The marker features adjustable tubular steel handles, pneumatic tyres and an adjustable flow rate. Recommended marking materials include propriety marking paints, emulsion paint, etc. Always check marking materials comply with H.S.E guidelines for sports field use.

Specification

Marking width	10cm 12cm
Overall / transport width	60cm
Hopper capacity	15 litres (3 gallons)
Weight (approx)	19.5kg
Carton dimensions	620mm x 660mm x 310mm







CAMPEY™

TPC Easy Load Trailer

The CAMPEY™ TPC Easy Load trailer is ideal for transporting the Toro Procore 648 to wherever it's being used. The Procore can be loaded with swath boards, with or without a core collector fitted. The fully galvanised trailer, complete with 50mm ball or clevis drawbar and a locking mechanism, makes for safe, easy transportation (travelling up to 15mph/25kph), with a ratchet strap fitted over the front wheel to secure it.

Specification

Length	3.65m
Width	1.72m
Weight	185kgs
Includes	Ratchet Strap for front wheel of machine on the trailer

* Not for road use

CAMPEY™

Easy-Load Trailer

Specialist easy-load trailer for transporting machinery on roads and across turf areas. Designed to transport the Air2G2, it will also accommodate other popular turf machinery like the Toro Procore, John Deere Aeracore, and small ride-on mowers. Fully road worthy, with brakes and lighting, the tail-board ramp lowers to allow safe and easy loading, and the tie-downs supplied will secure machinery in place. Supplied with spare wheel.

Specification

Overall Length & Width	380cm x 178cm
Body Load Space	250cm x 178cm
Wheel - Tyre size	195 x 55 - 10
Gross Weight	1300k
Unladen Weight	300kg
Maximum payload	1000kg





CAMPEY™

TDS2 Sub surface sports turf decompactor

The CAMPEY™ TDS2 is a heavy duty twin leg subsoiler designed specifically for the turfcare industry. Designed to operate behind a 40hp tractor on turf tyres, the Campey TDS2 is easily adjusted to relieve compaction and aid drainage at depths between 9.5 and 37.5cm. Weighing less than 430kgs and fitted with Cat I and Cat II hitch, the Campey TDS2 is designed to deliver a sub-surface shattering effect quickly and effectively with minimum surface disturbance. This creates fissures for grass roots to grow into, allows excess water to drain and links up existing drainage all without the need for external hydraulics or PTO.

Designed and manufactured in the UK by their highly skilled production team, Sumo has a worldwide reputation for the highest quality, durable cultivation equipment. This combined with Campey's renowned reputation for innovation in the turfcare industry has brought two market leaders together to deliver a simple but highly effective sub surface decompactor.

Specification

Overall transport width	1.70m	Number of legs	2
Operating depth	9.5 - 37.5cms		
Weight	430kgs	Roller type	Smooth
Roller width	1.55m	Adjustment type	Pin
Horsepower required	>40hp	Weight	698kgs
Hitch	Cat I,II	Breakback Protection	Shear bolt

CAMPEY™

Landscaper

The CAMPEY™ Landscaper is designed to construct a well graded, tilled and pulverized seed bed which is the first step to a healthy durable sward. Available in 2 different widths the Landscaper has the flexibility to carry out a number of different functions to suit the size of tractor available and the area of land to be prepared. The base unit will accept a Ripper Bar to break into a compacted surface, a levelling harrow and a Crumber Roller to pulverize the soil & lightly restore the surface. An optional seed hopper attachment can also be fitted to complete a one-pass operation.

Specification

Model	1.2	1.5	1.8
Working width	1.20m	1.50m	1.80m
Wt c/w harrow & crumber	238kg	300kg	352kg
Wt c/w harrow, crumber & ripper	N/A	330kg	435kg
Wt of optional seed hopper	50kg	55kg	58kg
Depth of Ripper Teeth	N/A	0-125mm	0-125mm
Tractor requirement approx.	25	30	35





CAMPEY™

Aeraseeder

The Campey™ Aeraseeders are a range of heavy-duty '2-in-1' overseeders designed for overseeding greens, tees, sports fields & other similar fine turf surfaces, with minimal disruption to the existing sward. The unique angled coned rollers produce approx 1750 holes per sq. metre, and the rear mounted brush ensures that seed is swept into the holes created by the coned roller. The hopper has an internal agitator to ensure a smooth seed flow and a floating headstock ensures good contour following. Available in 2 working widths. The Aeraseeder can be supplied coned / coned or coned / flat roller.

Specification

Model	1200	1800	2400
Working width	1.20m	1.80m	2.40m
Overall working width	1.30m	2.10m	2.67m
Hopper capacity	0.17m ³	0.42m ³	0.56m ³
Weight (empty hopper)	209kg	583kg	635kgs
Spike length	38mm	38mm	38mm
Roller perforations	1750 holes / m ²		
Options	Rear platform and brush (with coned spike roller)		

CAMPEY™

Pedestrian AeraSeeder

The 60cm Pedestrian Aeraseeder from Campeys provides simple, yet accurate initial and overseeding in those “hard to get at” places. At only 83cms wide, with a seeding area of 60cms, this mighty little machine will quickly overseed your golf greens, cemeteries, goal mouths, garden areas, and any other bare areas. The multi-spiked roller produces approx. 800 perforations per square yard, effectively saturating the top surface with a network of holes. This network, combined with our stainless steel seed apertures, brush, and smooth packing roller systems, offers the highest percentage of grass seed germination.

Specification

Seeding width	0.6m
Dimensions (WxLxH)	0.83m x 1.52m x 0.94m
Weight (approx)	182kgs
Front Roller	Cone
Rear Roller	Smooth





CAMPEY™

BM40 Scarifier with Collector

BM40 is a professional scarifier with fixed blade collection. Due to the blade fixing system, their replacement does not require the complete disassembly of the transmission and rotor, but only of the worn blades. The high-performance rotor guarantees excellent work in all conditions, even when the cutting edge of the blade is not in optimal condition. In addition, the collector with hydraulic discharge on the ground allows the material removed from the ground to be collected in a single pass. The high ventilation created by the rotor allows it to be used also as a leaf vacuum.

Specification

Model	BM40 - 1600
Number of blades	120
Working width	1.55m
Working depth	0.4m
Height	1.58m
Length	2.00m
Depth	1.25m
Weight	690kgs
Tractor	HP: 40+
PTO	540rpm

CAMPEY™

BM50 Verti-Cutter

The Campey BM50 Verti-Cutter is a professional scarifier with fixed blades. Due to the fixed blade system, it does not require the complete disassembly of the transmission and rotor, but only of the worn blades. The high performance rotor guarantees excellent work in all circumstances, even when the cutting edge of the blade is not in optimal condition. In the standard version the blades are made of HARDOX material with a thickness of 3mm and spaced 30mm apart.

*Optional 2mm and 3mm tungsten tipped blades available.

Specification

Model	BM50 - 1600	BM50 - 1800
No. of blades	96	104
Working width	1.60m	1.80m
Working depth	0.05m	0.05m
Height	0.8m	0.8m
Length	1.95m	2.15m
Depth	1.4m (with wheels) 1.0m (without wheels)	
Weight	250kgs (with wheels) 210kgs (without wheels)	290kgs (with wheels) 250kgs (without wheels)
Tractor HP	25	30
Weight of kit wheels for floating system		60kgs

Wheels are standard and can be removed



Spread light, heavy, wet or dry, nothing is easier to use or adjust than a Dakota Turf Tender.





DAKOTA

Well dressed

The Dakota Turf Tender range is specially designed for the fast transportation and application of topdressing. They will handle both wet and dry materials, allowing light to heavy dressing. Ideal for golf courses and sports fields.





Designed to save time, eliminate waste and reduce operating costs.

All Dakota's spread wet or dry material, meaning minimal passes, less visible wheel marks and quick operation and all spinner package points are common with larger models, meaning only a small selection of parts to stock if you have two or more machines.



- Large hoppers make for easy loading, also speeding up work

- A variety of materials can be used including sand, rubber crumb and other topdressing materials



- The dual-spinner system allows for extremely fine to extremely heavy spreading
- Available in electric or manual options to suit budgets



Electric Control Box

DAKOTA

310

The Dakota 310 is designed to ensure you can take Dakota's renowned spread anywhere. The small and very manoeuvrable dual spinner topdresser has a six-metre wide spread that can be infinitely varied using the individual and controls, making it perfect for spreading sand, rubber crumb and other top dressings on sports surfaces wherever they're located.

Specification

Spreading width	up to 6m (minimum spread width 2.40m)
Hopper size	0.91m (L) x 0.86m(W) x 0.45m(H)
Hopper load height	0.96m
Hopper capacity (15cm heaped)	0.29m ³ (level) - 0.34 ³ (heaped)
Weight (approx)	363kg unladen
Engine	Honda GX340
Tyre size	18 x 9.50 x 8

“ The reason I decided to get the Dakota 310 was for use over the autumn and winter months. I wanted to spare the greens the extra weight, and the 310 was the best way to do that without compromising on the quality of spread. ”

John Lockyer,
Director of Greenkeeping, The Wisley









DAKOTA

410 Mounted

The Dakota 410 is specially designed to be body mounted on the John Deere Pro-Gator and Toro Workman. It will handle both wet & dry materials, allowing light to heavy dressing and can easily be loaded with a 1.8m wide tractor bucket. It features accurate and easy to operate calibration, with no manual adjustment*. The 410 is easy to fit and allows for easy servicing due to its hydraulic lift function. It can be used to fill bunkers or drainage runs with optional accessories. Wide spread pattern via dual spinner discharge system.

Specification

Spreading width	3.5m - 13.0m variable
Hopper size	0.91m (W) x 1.93m (L) x 0.36m (deep)
Hopper load height	1.37m
Hopper capacity	0.65m ³ (level) - 0.76m ³ (heaped)
Weight (approx)	354kg
Options:	*Electric / hydraulic or manual controls Hydraulic rear door shut-off Rear mounted cross conveyor Rear mounted stone/gravel chute Parking stand
Vehicle requirements	Hi-Flow hydraulics

(for John Deere, Toro and Jacobsen)



DAKOTA

410 Towed

The Dakota 410 is specially designed for the fast transportation and application of top dressing. It will handle both wet and dry materials, allowing light to heavy dressing, and features an accurate and easy to operate electronic calibration system. In addition, the 410 features Ultra Trac turf tyres, an A-Frame hitch with adjustable height and a dual spinner discharge system. Using optional accessories, it can be used to fill bunkers or drainage runs with a 15cm hopper extension also available.

Specification

Spreading width	3.5m - 13.0m (dependant on tractor oil flow)
Hopper size	0.91m (W) x 1.93m (L) x 0.36m (deep)
Hopper load height	1.27m
Hopper capacity	0.65m ³ (level) - 0.76m ³ (heaped)
Capacity with 15cm extension	0.91m ³ (level) - 1.02m ³ (heaped)
Weight	645kg approx
Tractor requirements	Vehicle of approx 20hp min with towing capability
Options:	Hydraulic rear door shut-off Rear mounted cross conveyor / 15cm hopper ext. Rear mounted stone / gravel chute Electric / hydraulic or manual controls
Tyres	2 x Ultra Trac 26.5 x 14 x 12

“ I haven't seen any other machines that have the same sort of material handling capacity and versatility like the Dakota has. ”

Neil Lowther,

Golf Course Manager, Chart Hills GC

DAKOTA

411 Towed

The Dakota 411 is specially designed for the fast transportation and application of top dressing. It will handle both wet and dry materials allowing light to heavy dressings, and can easily be loaded with a 1.8m wide tractor bucket. It features accurate and easy to operate calibration with no manual adjustment*, and 4 x 14" Ultra-Trac turf tyres, on independent floating beam axles, for maximum weight distribution. Optional accessories for material handling and a 28cm deep hopper extension are also available.

Specification

Spreading width	3.5m - 13.0m (dependant on tractor oil flow)
Hopper size	0.91m (W) x 1.93m (L) x 0.36m (deep)
Hopper load height	1.27m
Hopper capacity	0.65m ³ (level) - 0.76m ³ (heaped)
Capacity with 28cm extension	1.14m ³ (level) - 1.25m ³ (heaped)
Overall length & width / weight	3.66m x 2.08m / 525kg
Tyres	4 x Ultra Trac 26.5 x 14 x 12
Tractor requirements	30hp
Options:	*Electric / hydraulic or manual controls. Hydraulic rear door shut-off Rear cross Conveyor. 28cm Hopper extension Rear mounted stone/gravel chute







DAKOTA

412 Towed

The Dakota 412 is a mid-range topdresser for the fast transportation and application of top dressing. It will handle both wet and dry materials allowing light to heavy dressings, and can be easily loaded with a 1.8m wide tractor bucket. It features accurate and easy to operate calibration with no manual adjustment and features 4 x 14" Ultra-Trac turf tyres, on independent floating beam axles, for maximum weight distribution. Controls are electro-hydraulic operated from the operator's seat, with the basic manual model using elec stop - start with no vibration.

Specification

Spreading width	3.5m - 13.0m (dependant on tractor oil flow)
Hopper size	1.52m (W) x 1.93m (L) x 0.96m (deep)
Hopper load height	1.68m
Hopper capacity	1.53m ³ (level) - 1.85m ³ (heaped)
Weight (approx)	827kg (3549kg G.V.W)
Overall length & width	3.95m x 2.08
Tyres 4 x Ultra Trac	26.5 x 14 x 12
Tractor requirements	35hp
Options:	Hydraulic rear door shut-off Electric / hydraulic or manual controls





DAKOTA

414 Towed

The Dakota 414 is a large towed topdresser with a huge 3.25m³ capacity hopper. It will handle both wet and dry material allowing light to heavy dressing, and can be easily loaded with a 1.8m tractor bucket. It features accurate and easy calibration with no manual adjustment using the full electric/hydraulic cab mounted console, which allows a variable spreading width up to 13m wide via the dual spinner system. In addition, the 414 features 4 x 20" Supatrac turf tyres on independent floating beam axles for maximum flotation.

Specification

Spreading width	3.5m - 13.0m (dependant on tractor oil flow)
Hopper size	1.78m (W) x 2.54m (L) x 1.00m (deep)
Hopper load height	2.00m
Hopper capacity	3.25m ³ (level) - 3.82m ³ (heaped)
Weight (approx)	1361kg (5,897kg G.V.W.)
Overall length & width	4.77m x 2.44m
Tyres	4 x Supa Trac tyres 33 x 20 x 16.1
Tractor requirements	40hp minimum
Options:	Hydraulic rear door shut-off

DAKOTA

420 Towed

The Dakota 420 is a mid-range topdresser and multi-function material handler. It will handle both wet and dry material allowing light to heavy dressing and can be loaded with a 1.8m wide tractor bucket. It features accurate and easy to operate full electric / hydraulic calibration with no manual adjustment, all from the vehicle mounted control panel. The 420 has 4 x 14" Ultra Trac turf tyres on independent floating beam axles, large capacity hopper, front mounted side conveyor and spreading width up to 13m wide via the dual spinner discharge system.

Specification

Spreading width	3.5m - 13.0m (dependant on tractor oil flow)
Hopper size	1.52m (W) x 1.93m (L) x 0.76m (deep)
Hopper load height	1.68m
Hopper capacity	1.53m ³ (level) - 1.85m ³ (heaped)
Overall length & width	4.36m x 2.08m
Weight	1360kg
Side-arm conveyor	35cm wide. 120cm - 185cm discharge height
Tyres 4 x Ultra Trac	26.5 x 14 x 12
Tractor requirements	30hp minimum
Options:	Hydraulic rear door shut-off Front mounted stone / gravel chute Front mounted box scraper





Ideal for topdressing sports fields,
fairways and greens.

Perfecting Play™



Visit www.campeyturfcare.com







DAKOTA

440 Towed

The Dakota 440 is a large capacity, highly versatile topdresser and material handler. It will handle both wet and dry material allowing light to heavy dressing and can be loaded with a 1.8m wide tractor bucket. It features accurate and easy to operate full electric / hydraulic calibration with no manual adjustment, all from the vehicle mounted control panel. The 440 has 4 x 20" Supa Trac turf tyres on independent floating beam axles, large capacity hopper, front mounted side conveyor and spreading width up to 13m wide via the dual spinner discharge system. Full electric / hydraulic controls.

Specification

Spreading width	3.5m - 13.0m (dependant on tractor oil flow)
Hopper size	1.78m (W) x 2.54m (L) x 1.00m (deep)
Hopper load height	2.00m
Hopper capacity	3.25m ³ (level) - 3.82m ³ (heaped)
Overall length & width / weight	4.77m x 2.44m / 1750kg
Side-arm conveyor	35cm wide. 120cm - 185cm discharge height.
Tyres	4 Supa Trac tyres, 33 x 20 x 16.1
Tractor requirements	40hp minimum
Options:	Hydraulic rear door shut-off Front mounted box scraper / Blender Option Front mounted stone/gravel chute



DAKOTA

Options

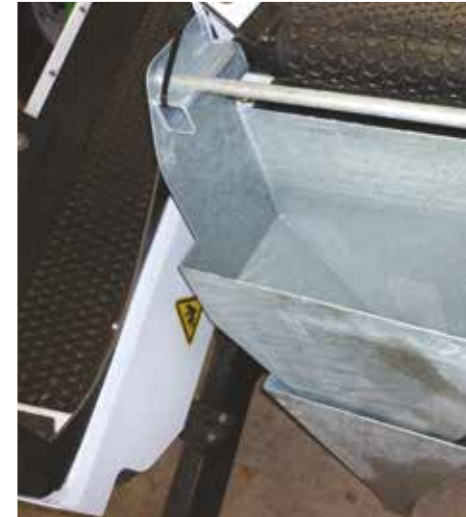
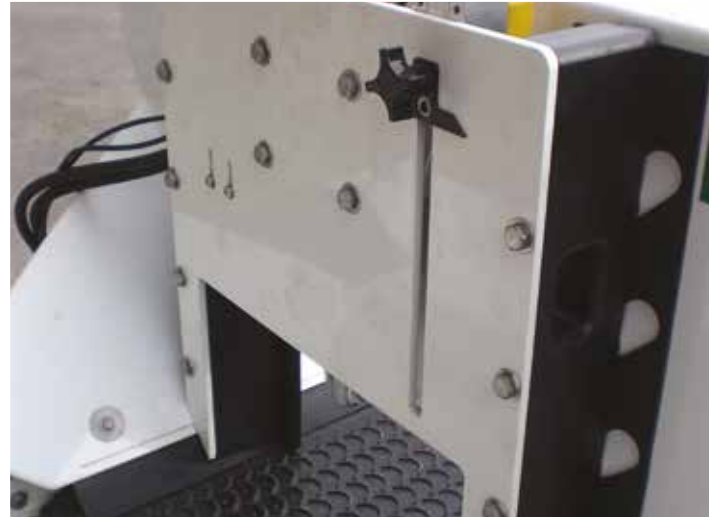
A front mounted, floating Box Scraper is available for the 440 and 420 models, for creating layers of dressing during construction or renovation.

Automatic, hydraulic rear doors are available for all models.

Front mounted stone/gravel chutes are available for 440 and 420 models. Rear stone/gravel chutes are available for 410 and 411 models.

The Dakota 440 Blender option is an adjustable, material mixing system to pre-mix material before discharge and is mounted on the front of the main hopper.

Rear mounted cross conveyors are available for 410 and 411 models.







DAKOTA TURF
CONTRACTOR 550

DAKOTA 550

DAKOTAPEAT.com



DAKOTA

Turf Trailer

The Dakota Turf Trailer is an easy to manoeuvre large capacity hydraulic lift turf trailer. It features an automatic opening tailgate, 65° tipping angle, removable sides, jack stands, A-Frame construction and 4 x 16" width Ultra Trac flotation tyres on independent walking beam axles. All functions of the trailer are controlled from the tractor seat.

Specification	525	550
Body length	2.15m	3.05m
Body width	1.40m	2.13m
Body (side) height	0.82m	0.96m
Body capacity (m ³)	1.53m ³ (level)	3.06m ³ (level)
Body capacity (kg)	2,500kg (level)	5,000kg (level)
Overall length & width	4.36m x 2.08m	4.88m x 2.44m
Weight (unladen)	862kg	1,368kg
Tyres 4 x Ultra Trac SupaTrac flotation tyres	26.5 x 14 x 12	33 x 20 x 16.1
Tractor requirements	27hp minimum	27hp minimum



DAKOTA

D60 Box Scraper

Specifically designed for mounting behind bunker rakes, the D60 lightweight box scraper is perfect for construction and shaping. The compact unit is ideal for moving and shaping small volumes of material and for the final levelling of the surface.

Specification

Working width	1.50m
---------------	-------

Approx weight	45kg
---------------	------

DAKOTA

Soil Movers

Dakota make a range of tractor towed soil movers for moving and levelling soil and sand. Ideal for landscaping, grading and shaping during the construction or repair work on golf courses, sports fields or other amenity sites. With ripper teeth fitted, more aggressive work can be carried out, such as breaking up compacted ground or pathways. Features include hydraulic height control, standard hydraulic two-way tilt on rear wheels (on 2.4m and 3.0m models only), hydraulically retractable ripper teeth & bolt-on straight edge. Available in three working widths. Can be adapted for laser levelling either single grade or dual grade.

Specification

Working widths	1206 = 1.8m wide
	1208 = 2.4m wide
	1210 = 3.0m wide
Ripping teeth	1206 = 6 hydraulically lifting teeth
	1208 = 8 hydraulically lifting teeth
	1210 = 12 hydraulically lifting ripper teeth
Tyres	2 x 26.5 -14 x 12





DAKOTA

TB 220 Brush

The Dakota TB 220 Turf Brush is used for several routine maintenance tasks including GROOMING – lifting the long, laid-over grass blades so a mower can cleanly cut them; for MOVING TOPDRESSING into the canopy of the turf; and it's perfect for BACKFILLING voids after aerating, spiking, or verticutting procedures. The TB 220 Grooming Brush, US Patent No. 9,185,150 a versatile, labor-saving grooming tool for turf that improves the appearance, playing quality, and growing conditions of golf courses and sports fields. An affordable investment for a turf manager's program from 9 hole courses to major tournament venues.

Specification

Working width	1.3m
Overall width	165cm
Length	285cm
Height	62.5cm
Brush Diameter	37.5cm
Control Cable (electric) Length	375cm 12V actuator
Tyre sizes - Drive wheels	16 x 6.50 - 8
Weight	168kgs





“ We continuously strive to develop machines that deliver maximum performance with the minimum possible effort and fuel ”



IMANTS

Over 130 years producing quality turf care machinery

Imants has a great range of machines to keep turf healthy for golf courses, sports fields and parks. Imants continuously strives to develop machines that deliver maximum performance with the minimum possible effort and fuel.



IMANTS

ShockWave

1.0 / 1.6 / 2.1 / 220 / 275 /
eXtreme 275 / 366

The Imants ShockWave is the perfect linear decompactor for heavily used areas where play can't stop. This machine is designed to revitalise fine turf and sports fields by relieving soil compaction, improving aeration and removing surface water, all whilst causing minimal surface disruption so play can resume quickly and safely. All ShockWave models feature a no-chains, direct drive design, maintenance free 'sealed for life' bearings and no shear bolts

Imants ShockWave 220/275 brings linear decompaction to wide areas, making it the perfect machine for contractors. Using thicker 15mm knives and featuring hydraulic depth adjustment from the tractor, this machine takes the ShockWave's attributes of relieving soil compaction, improving aeration and removing surface water and applies them to large turf areas that need to be revitalised and ready for action quickly.



- Minimal surface disruption allows play to continue quickly

- Removes surface water



- Improves drainage and water percolation

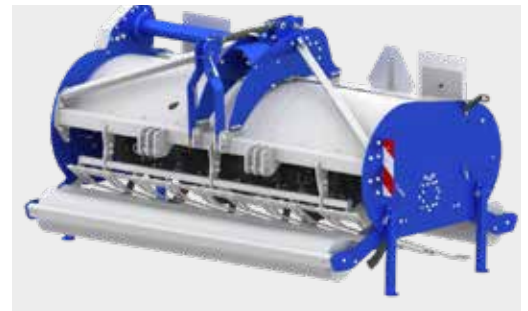
Designed to revitalise heavy wear areas by relieving soil compaction, improving aeration and removing surface water.

- Provides maximum decompaction in the rootzone to improve turf quality

Specification	1.0	1.6	2.1	220	275	eXtreme	
						275	366
Working width	1.00m	1.60m	2.10m	2.20m	2.75m	2.75m	3.66m
Working depth	110mm - 250mm	110mm - 250mm	110mm - 250mm	120mm - 280mm	120mm - 280mm	150mm - 330mm	150mm - 350mm
Number of blades	12	18	24	24	30	30	39
Blade thickness	12mm	12mm	12mm	15mm	15mm	15mm	15mm
Blade spacing	265mm	265mm	265mm	275mm	275mm	275mm	277mm
Machine length	1.38m	1.38m	1.38m	2.20m	2.75m		
Machine width	1.20m	1.75m	2.30m	2.50m	3.00m	2.18m - 3m	2.18m - 3.91m
Machine weight (approx.)	525kgs	635kg	750kg	1250kg	1750kg	2100kg	2400kg
Power requirement	41 - 54hp	41 - 54hp	41 - 54hp	80hp +	100hp +	95hp	95hp
Tractor requirements	540 pto. Creep gear or hydrostatic drive required						
Operating speed	0.5 - 1.5 mph (0.5 - 2.4kph)					0.5 - 1.9mph	0.5 - 1.9mph
Option: Turf retainer						125kg	166kg



- Features a no-chains direct drive, 'sealed for life' bearings and mechanical drive overload protection





IMANTS

Mini RotoKnife

The Imants Mini Rotoknife is an easy to use versatile root zone management tool that improves aeration, reduces thatch build-up and removes surface water for improved root zone quality and increased play. The machine's versatility comes from the three working positions of the rotor, which allows slitting to a depth of 100mm or shallow slitting at 50mm spacings, with minimal surface disruption and no after-use clean up required. The Mini RotoKnife is available in towed or mounted format and is compatible with most turf trucksters and compact tractors. It is ideal on warm or cool season grasses.

Specification

Working width	1.50m - 1.60m
Transport width	1.80m 3pt mounted / 2.20m towed
Working depth	20mm - 100mm (variable settings)
Number of discs	29 x 200mm Mini Discs, 5 x 300mm Discs
Disc thickness	3mm (200mm disc) 4mm (300mm disc)
Disc spacing	50mm, 100mm, & 300mm
Weight	550kg (towed) 470kg (mounted)
Tractor requirement	25hp – Cat 1: 3pt linkage (mounted) / hydraulic spools
Tractor requirement	50mm ball hitch. Double acting hydraulics (towed)
Operating speed	0 - 12 mph (0 - 20 kph)
Options	Electric actuator to lift and lower when towed

IMANTS

RotoKnife 1800

The Imants RotoKnife 1800 is an easy to use versatile root zone management tool that improves aeration, reduces thatch build-up and removes surface water. The linear aerator's versatility comes from the five working positions of the rotor, which allows slitting to a depth of 150mm or shallow slitting at 50mm spacings, with minimal surface disruption and no after-use clean up required. As a result, the RotoKnife is an ideal root zone enhancement tool for both warm and cool season grasses and can even be used as a surface smoothing roller.

Specification

Working width	1.80m
Transport width	2.30m
Working depth	10mm - 150mm (variable settings)
Number of discs	6, 17, 18, 35
Disc thickness	3mm (200mm disc) 4mm (200mm & 450mm disc)
Disc spacing	50mm, 100mm, & 300mm
Disc diameter	200mm, 450mm
Weight	895kg
Power requirement	45hp
Operating speed	0 - 12mph (0-20kpm)





IMANTS

RootPruner

The Imants RootPruner prunes roots up to 100mm in diameter with no cleanup. It can prevent root encroachment under vital areas, eliminating loss of valuable water and nutrients and prevent surface damage. It also has the ability to decompact tight, narrow areas with ease. Includes unique patented triple-reduction planetary gearbox, for smooth, maximum torque drive to rotor shaft. The RootPruner also features a factory set, torque limiting PTO shaft eliminating all shear bolts & spring clutches.

Specification

Working width	0.60m
Transport width	0.90m
Working depth	250mm
Number of blades	6
Blade thickness	15mm
Blade spacing	270mm
Weight (approx)	415kg
Power requirement	40 - 60hp
Tractor requirements	540 PTO. Creep gear or hydrostatic drive required
Operating speed	0.3 – 0.75mph (0.5 – 1.2kph)



IMANTS

Quick Drain

Designed predominantly for turf care contractors and golf courses, the Imants QuickDrain is a secondary drainage tool which attaches to the Imants RootPruner to allow sand slits. Assisting in drainage helping to dry out wet areas, it is ideal for high traffic areas. The QuickDrain is only available for 2018 models onwards. Whilst a RootPruner is fitted with the QuickDrain it is not to be used to prune roots.



Read independent
reports on the
Imants SandCat



Results of surface after SandCat and Vredo Seeder work.

IMANTS

SandCat

The Imants SandCat moves lightly over the turf, slitting the surface and introducing kiln dry sand to improve drainage and enhance the properties of the rootzone, with the compact size of the machine making it ideal for greens and tees. Used empty, it has similar features to the Imants ShockWave and can be used to aerate hard, compacted areas of fine turf. The SandCat features overload protection by a torque limiter PTO shaft.

Specification

Working width	1.20m
Transport width	1.60m
Working depth	Cutting blades 150mm / sand injection 120mm
Blade number & thickness	21 - 8mm
Blade spacing	150mm
Hopper capacity	500 litres
Weight (approx)	650kg (empty)
Power requirement	30hp +
Tractor requirements	540 PTO. Creep gear or hydrostatic drive required
Operating speed	0.3 - 1.5mph (0.5 - 2.4kph)

“ We had to find an additional way of carrying the water from the surface down into the main drainage system and we looked at gravel banding, solids and everything but the method that impressed us most of all was the SandCat. ”

Ronnie Miles,

Head Greenkeeper, Buchanan Castle Golf Club

IMANTS

RotoBlast

The RotoBlast is a tractor mounted blower, designed to move leaves, grass clippings, thatch, litter and other unwanted surface debris from important areas. Typically used for clearing greens and tees, fairways, pathways and other sports turf areas. Attached to the 3-point linkage, the powerful blower is mounted on a wheeled chassis to allow contour following while maintaining a constant nozzle height above the ground. The wheels can be inverted to revert to a fully mounted option if required.

Specification

L x W x H	86.5cm x 1.18m x 98cm
Weight (approx)	190kgs (with PTO 202kgs)
RPM on blower	3,750rpm
Air Velocity	130m3/min
Max chute angle & height	225 degrees / 18cm
Power requirement	25hp
Tractor requirements	Cat 1, 3-point linkage. 540 PTO
Operating speed	0.6 - 6.2mph (1 - 10 kph)





imants

Campsey
imants
Perfecting Play



IMANTS

RotoSweep & Rhea Scarifier

The RotoSweep offers efficient removal of surface debris from sports turf, including cores, grass clippings, leaves and general litter collection. Featuring a dual powered brush system, even heavy debris can be collected without any damage to the grass. The RotoSweep is tractor towed, powered from the PTO and tipped hydraulically, with the centrally positioned axles allowing tight contours to be followed. An independent floating scarifier attachment, the RHEA, can be attached in front of the RotoSweep.

Specification

Model	RotoSweep	Rhea MKII Scarifier
Working width	1.70m	1.70m
Transport width	1.90m	1.92m
Length (incl. Drawbar)	3.20m	0.50m
Height	1.45m	0.50m
Tipping height	approx 1m (depending on length of link arms)	
Hopper capacity	2.5m ³	
Number of brushes / blades	8 brush strips	72 or 144 (2 or 3mm thick)
Weight (approx)	650kg (empty)	210kg
Power requirement	30 - 50hp	
Tractor requirements	540 PTO. Double acting spool	
Operating speed	0 – 10mph (0 - 18kph)	0 – 4mph (0 – 6kph)

IMANTS

Penetrometer

The hand-operated Imants professional compaction meter is a quick, easy and reliable method of measuring compaction levels in the soil / root zone. Understanding the degree of compaction and how it can prevent roots from accessing oxygen allows swift action to relieve compaction and prevent ongoing issues, with 20 bar pressure (285 psi) widely considered the problem range.





OFFICIAL
KORO
DISTRIBUTOR

The original and best just got better

THE REMASTERED KORO® FTM® RANGE

The indisputable success of the Koro® FIELDTOPMAKER® across all sports surfaces has helped produce healthier turf through greatly improved surface hygiene, and the remastered 1.2m, 1.6m, 2.0m and 2.5m models build on that success.

To make the machines more user-friendly for golf the weight and balance have been analysed, resulting in a lighter, steadier experience. Solid locking pins now offer greater consistency and the overall performance is improved due to the re-designed patented UNIVERSE® rotor and angled cross conveyor.

The new angled cross conveyor has been introduced to move material evenly with perfect belt tracking, while the weight of the machines has been reduced using a removable 100kg that greatly improves the overall weight balance.

This redistribution of weight means a much smaller tractor can be used to run the KORO® FTM®,

because the centre of gravity has been shifted towards the tractor making it easier to lift. Even when the weight is removed the machine still has improved balanced against previous models.

Maintaining the new range of KORO® FTM®'s has also been enhanced to ensure working reliability. A modular set-up allows the machine to run without belts and the strong state of the art driveline is maintenance free.

All of the range can facilitate the enhanced patented UNIVERSE® rotor which offers improved clean up and greater surface hygiene. Previous rotors will fit on the 2.0m and 2.5m models but not on the 1.2m or 1.6m.



UNIVERSE® Rotor



Terraplane® Rotor





Specifically designed for all sports turf and golf course maintenance

Improved clean up due to new re-designed UNIVERSE® rotor and angled cross conveyor

Solid locking pins for consistency



Large diameter rollers for stability and super depth control



Patents are held for the Universe rotor - please visit www.campeyturfcare.com/ip for further details

KORO® BY IMANTS

UNIVERSE® Rotor

Patent No. W02013/027005

Further research and testing on different sports turf and grasses, to see how long the recovery time was in different situations, led to the development of different thicknesses of UNIVERSE® blades. 5mm and 3mm blades were developed for KORO® UNIVERSE® Finesse mowing, which will deliver a more refined finish, the working depth of the rotors can be set with infinite precision.

All 3 blades can be used on natural turf, on both cool and warm season grasses for KORO® UNIVERSE® Finesse Mowing, or KORO® UNIVERSE® Fraze Mowing.

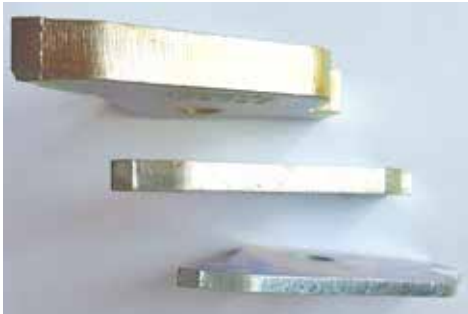
For Natural / Hybrid Surfaces

The UNIVERSE® rotor was initially developed for the removal of organic build up from the surface of semi-synthetic natural turf pitches that are now common in professional stadiums around the world.

The UNIVERSE® rotor (fitted with 10mm blades) achieves excellent surface hygiene without damaging the exposed synthetic/hybrid fibres. In one pass the whole annual renovation process to include dressing with 40/50 ton of sand, fertilising and overseeding can be carried out in one day instead of 4/5 days, with the process known as Koro UNIVERSE® Fraze Mowing.

UNIVERSE® Fraze Mowing on natural/hybrid surfaces allows the turf professional to maintain the original quality of the surface.





2012 / 2013 saw the introduction of 2 new rotors for the KORO® FTM®; UNIVERSE® and TERRAPLANE®.

The first blades designed for the UNIVERSE® rotor where 10mm.



10mm tungsten tipped blades in 4 spiral UNIVERSE® rotor configuration

Campey
TURF CARE SYSTEMS
QUALITY GROUND CARE EQUIPMENT

MF22
LBL

MODEL FT111





Percentage removed with different blades and configurations of the UNIVERSE[®] Rotor

10mm

- With the 10mm blades on 4 spiral you remove 100% of the surface
- With the 10mm blades on 2 spiral you remove 50% of the surface with 10mm gone 10mm still there

5mm

- With the 5mm blades on 4 spiral you remove 50% of the surface with 5mm and gone 5mm still there
- With the 5mm blades on 2 spiral you remove 25% of the surface with 5mm gone and 15mm still there

3mm

- With the 3mm blades on 4 spiral you remove 30% of the surface with 3mm gone and 7mm still there
 - With the 3mm blades on 2 spiral you remove 15% of the surface with 3mm gone and 17mm still there
-



KORO® by Imants - FIELD TOP MAKER® model options

MODEL	1200	1600	2000	2500
Working width	1.20m	1.60m	2.00m	2.50m
Overall / transport width	1.60m	1.80m	2.55m	2.95m
Approx weight*	1,065kg	1,150kg	1,695kg	1,955kg
Working depth	0 to 50 mm			
Elevator discharge height	Approx 1.50m / 60"		Approx 2.0m	
Recommended tractor	35 - 50hp	45 - 65hp	70 - 100hp	95 - 120hp
Tractor mounting	Cat I or II, 3-pt linkage		Cat II, 3pt linkage	
Tractor requirements	2 x double acting spool valves - 30L/min Creep speed gearbox or hydrostatic drive 540 PTO drive		2 x double acting spool valves - 40L/min	
Operating speed	0 – 2kph / 0 – 1.2mph for Digging and Terraplane® rotors 0 – 4kph / 0 – 2.4mph for UNIVERSE® rotor 0 – 6kph / 0 – 3.72mph for Scarifying rotor			
OPTIONAL ACCESSORIES				
Mid-Mounted Roller	Optional	Optional	Optional	N/A

MODEL	1200	1600	2000	2500
OPTIONAL ROTORS				
Digging Rotor	Available	Available	Available	Available
Number of Blades	40	52	64	80
Terraplane® Rotor	Available	Available	Available	Available
Number of blades	36	45	60	75
UNIVERSE® Rotor	Available	Available	Available	Available
Number of 10mm blades (on every holder)	121	151	202	252
Number of 5mm blades (on every holder) **	121	151	202	252
Number of 3mm blades (on every holder) **	121	151	202	252
Scarifying Rotor	Available	Available	Available	Available
3mm Tipped Blades	Optional	Optional	Optional	Optional
1.5mm Tipped Blades	Optional	Optional	Not recommended	Not recommended
Number of Blades	70	88	112	148
Blade spacing	34mm	34mm	34mm	34mm

**depending on rotor ** different configurations are available*



KORO FTM



Depth setting is accurate to 0.5mm, via a digital display read out



KORO® BY IMANTS

Terraplane® Rotor

The Terraplane Rotor® now leads the way in accuracy of cut, blade durability and surface hygiene. Coupled with the KORO® FTM®'s infinitely fine, depth adjustment (accurate to 0.1mm), the Terraplane® Rotor will shave off the precise amount of organic material required, leaving a clean, smooth and even surface. The durability of the tungsten-faced blades prolongs the accuracy of cut, and reduces the down-time associated with changing blades. The unrivalled surface hygiene of the Terraplane® Rotor eliminates any clean-up pass and saves time, labour and fuel costs.



KORO® BY IMANTS

RECYCLINGDRESSER® MKII

The RECYCLINGDRESSER® saves labour and material costs by redistributing the existing soil across the playing surface. This sustainable maintenance practice aerates the underlying soil vertically and horizontally, removing soil from the root zone and redistributing it. This process eliminates layering and compaction whilst increasing biological activity and getting extended use from existing fertilisers in the soil. The RECYCLINGDRESSER® is available in three working widths to suit various applications.

Specification

Model	1600 MK II	1900 MK II	2200 MK II
Working width	1.60m	1.90m	2.20m
Working depth	10 - 17cm		
No. of digging blades (8mm thick)	20	24	28
Spacing of digging blades & discs (interpitched)	300mm		
No. of coulter discs (4mm) thick	6	7	8
Weight (approx) inc extra weight	1,010kg	1,130kg	1,250kg
Power requirements with creep box*	50hp plus	60hp plus	80hp plus
Tractor requirements	540 PTO.		
Operating speed	0.5 – 0.75mph (0.5 – 1kph)		



KORO® BY IMANTS

Speed Harrow

The Speed Harrow is designed for the fast and efficient levelling of sports fields after heavy topdressing, surface cultivation or using the RECYCLINGDRESSER®. Specially designed flute bars help to level the surface by letting the dressing flow through, whilst the 'competition spec' removable light levelling bars are suspended beneath the main frame for rubbing in light dressing on turfed surfaces. The Speed Harrow 4100 is three-point linkage mounted and has a hydraulic lift to the wing units, with the Speed Harrow 2000 coming as a single rigid unit.

Specification

Model	SH 2000	SH 4100
Working width	2.0m	4.1m
Transport width	2.05m	1.76m
Length	1.94m	1.94m
Weight (approx)	150kg	300kg
Power requirement	30 - 45hp	50 - 75hp
Tractor requirements	Hydraulic spool	
Options	Competition decks	





KORO® BY IMANTS

TopDrain 1000

The TopDrain 1000 provides a complete one pass surface drainage system that saves labour and material with faster processing times and less surface contamination. Designed for sports fields and golf course fairways, the unique multifunctional machine trenches, removes spoil, injects sand and re-compacts all in one operation. The sand grid created by this process is intended to complement existing drainage systems.

Specification

Working width	1.00m
Overall width	2.24m
Machine height (machine on legs)	2.52m * rear wheels lowered
Height of elevator (blades on ground)	1.70m
Height of hopper (blades on ground)	1.85m
Machine length	4.99m
Working depth	260mm (maximum)
Weight (approx)	2,500kgs (unladen)
Number of cutting discs	2
Spacing of discs	1.00m
Thickness of digging blades	4cm
Power requirement	70hp – 85hp maximum
Tractor requirements	540 PTO / 6 spline PTO 6 hyd valves – female fittings on tractor required
Operating speed	0 – 3 kph
Options	Road lights

KORO® BY IMANTS

TopDrain 1500

The TopDrain 1500 provides a complete one pass surface drainage system that saves labour and material with faster processing times and less surface contamination. Designed for sports fields and golf course fairways, the unique multifunctional machine trenches, removes spoil, injects sand and re-compacts all in one operation. The sand grid created by this process is intended to complement existing drainage systems.

Specification

Working width / Overall width	1.50m / 2.75cm
Working depth	15 - 225mm
Number of cutting blades	3
Spacing of blades	50cm
Thickness of blades	40mm
Weight (approx)	3300kg (unladen)
Power requirement	95hp Creep gear
Tractor requirements	540 PTO. 2 x double, 1 x single spool, 12v plug
Operating speed	0 - 1.8mph (0 - 3kph)
Options	Extended side conveyor. Hopper vibrator





OFFICIAL
**Martin
Lishman**
DISTRIBUTOR

A New Concept In Spraying

The Martin Lishman Micro-Spray pedestrian sprayer is designed for all types of sports grounds.



Available Worldwide Exclusively From Campey Turf Care Systems

MARTIN LISHMAN

Micro Spray

Combining control and power with responsive easy handling, the Martin Lishman Micro-Spray pedestrian sprayer is designed for all types of sports grounds, golf courses and landscaping work. The Micro-Spray brings a new concept in spraying versatility to the groundsman's armoury. First launched in 2011, the Micro-Spray now comes with an upgraded specification, making it more versatile in a wider range of situations. A 120 litre tank with a 2.5m 6 nozzle, 3 section folding boom with break back and height adjustment, independent shut-off nozzle bodies and reduced drift air inclusion nozzles will suit the majority of spraying situations. An optional hand lance for spot treatments and a bout marker are also available. The Micro-Spray has a narrow footprint so it can fit through most gateways and passageways to tackle hard to reach spraying areas. The design ensures it also has a low centre of gravity.

The comprehensive yet easy to use control box gives the operator more control over the sprayer with changeable motor direction to either walk behind or in front of the sprayer, 12 motor speeds, bout marker selection and a battery level indicator.

Specification

120 litre tank

Break back

2.5m

3.5m 8 nozzle, 3 section folding boom

Independent shut-off nozzle bodies

Reduced drift air inclusion nozzles

Optional hand lance and a bout marker / triple nozzles

Boom height adjustment





QUALITY GROUND CARE EQUIPMENT

OFFICIAL

OMARV

DISTRIBUTOR

The Italian collection

The award winning Omarv range of professional flail mowers and collectors

Available Exclusively From Campey Turf Care Systems

OMARV

Alba

The Omarv Alba range is the smallest of the mounted flail mowers, designed for use behind compact tractors in the 25 - 55hp range. The mowers are heavy-duty, the hopper has slightly more capacity & a hi-tip hydraulic discharge option is available. There are three model width options, all fitted with cutting blades. Suitable for golf courses, sports fields and general amenity use.

Specification	ALBA 120	ALBA 140	ALBA 160
Working width	1.15m	1.35m	1.55m
Overall width	1.40m	1.60m	1.80m
Hopper capacity	600ltr	800ltr	1000ltr
Number of cutting blades	18	20	24
Weight	420kg	480kg	545kg
Tractor power	25 - 35hp	35 - 40hp	40 - 55hp
Tractor requirement	540 PTO, hydraulic spool valve		



OMARV

Venezia

This top of the range trailed flail mower / collector is designed for use behind tractors in the 55 - 90hp range. It is extremely heavy-duty and suitable for grass mowing and thick brush cutting. While suited to sports field and golf course use, it has wider use in amenity grassland maintenance and heathland management. Features include electro-hydraulic cutting height adjustment and automatic belt tensioner. Unloading can be carried out directly into trailers or lorries for disposal with the hi-tip facility, and the draw-bar can be offset by 40cm to allow close mowing to walls & perimeter hedges, etc.

Specification	140	190	225
Working width	1.40m	1.90m	2.25m
Overall width	1.80m	2.40m	2.40m
Hopper capacity	350m ³	750m ³	850m ³
Tipping height	1.80m	2.80m	2.80m
Weight (unladen)	1,850kg	3,950kg	4,250kg
Number of flail blades	14	20	24
Wheels	13.0/55.16	19.0/45.17	19.0/45.17
Tractor power	55 -70hp	90hp - 100hp	90hp - 100hp







Accurate and efficient range
of disc seeders



VREDO

Specialist overseeder for grass playing surfaces

The Vredo Overseeder places the grass seed in direct contact with the soil giving almost total seed germination and benefits from an infinitely adjustable and highly accurate seed dosage mechanism.



Perfecting Play™



Research has confirmed that the Vredo Overseeding System generates a germination rate of 96%

VREDO

Turf-Fix

The Vredo Turf-Fix Series is a very compact, multi-function machine for professional landscapers, contractors and clubs, looking to carry out a number of renovation and maintenance tasks with just one machine. Mounted or towed, the Turf-Fix can be used to overseed, apply sand dressing, sand slitting and aerate, simply by fixing different attachments to a universal base unit. Compatible with tractors as small as 16hp.

Specification

Seed dosage	Stepless 3 to 190 kg/ha
Disc diameter	Ø 150 mm
Element	Low maintenance with steel scraper 0-20 mm sowing depth
Turf guard	Adjustable
Front support wheel	Adjustable
Tyre roller with lawn profile	4 or 6 tyres 13x6.5-6
Calibrating	Calibration table newly improved calibration tray section

Model	DZ5 65(T)	DZ5 95(T)
GPS working width	63cm	98cm
Transport width	78.3cm	113.3cm
Row spacing	0.35cm	0.35cm
Volume of seed hopper	42 litre	66 litre
Weight	180kg	240kg
Recommended 20kg weights	6 (300)	10 (440)
Tractor power	20/15 HP	25/20 HP
Depth adjustment	Top link / drawbar	
Dimensions lxxw (cm)	80.9 x 78.3 x 85.5	80.9 x 113.3 x 85.5

(T) Wheel set and drawbar assembly, 27 kg extra weight and adding 63.5 cm to the machine's length







VREDO

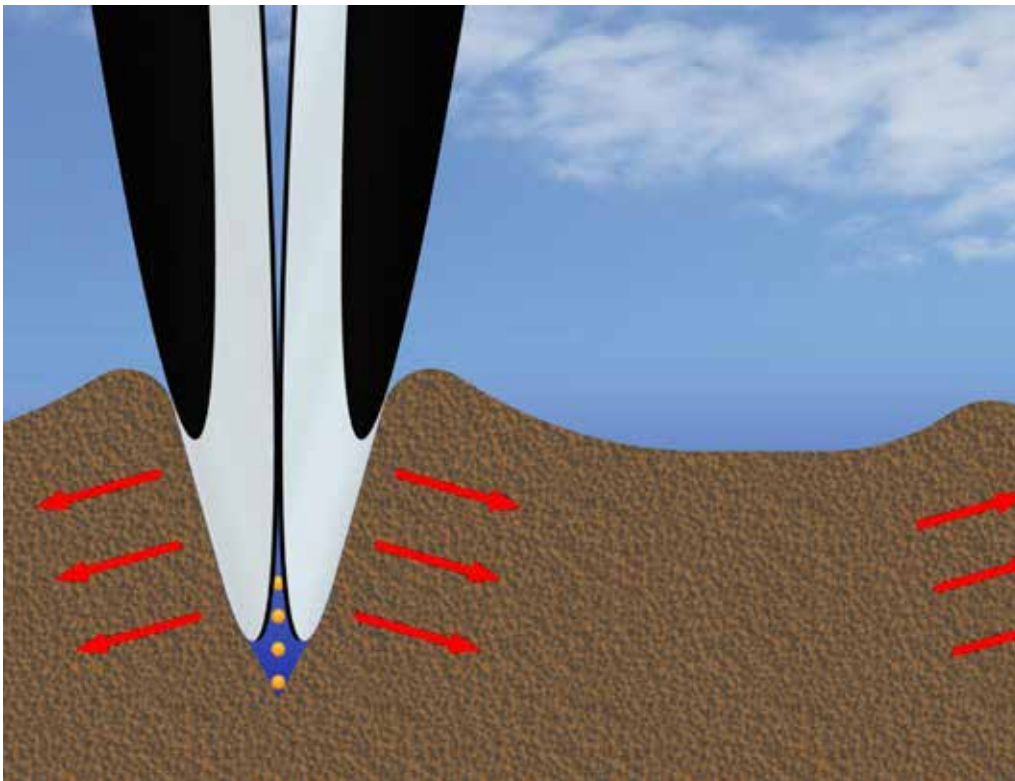
Single Compact

The Vredo Single Compact Series is an accurate and efficient range of disc seeders designed for overseeding golf greens and tees, sports pitches and other amenity grass. Seed is placed in a V-shaped slit at a pre-set depth of between 5mm and 25mm deep, directly in contact with the soil for maximum germination rate. The slits are then closed by a compaction roller and a level surface re-established. There are 4 different widths available to suit tractor overlap, all 3-point mounted behind compact tractors.

Specification

Seed dosage	Stepless	3 to 190 kg/ha
Disc diameter	Ø 250 mm	
Element	Progressively sprung 0-20 mm sowing depth	
Turf guard	Adjustable	
Pressure roller	Ø 220 mm with self-adjusting scraper	
Calibrating	Calibration table newly improved calibration tray section	

Model	DZ5 100	DZ5 140	DZ5 180	DZ5 220
GPS working width	98cm	140cm	182cm	220cm
Transport width	115cm	157cm	199cm	241cm
Row spacing	0.70cm	0.70cm	0.70cm	0.70cm
Volume of seed hopper	165 litre	235 litre	303 litre	375 litre
Weight	400kg	503kg	606kg	710kg
Recommended 20kg weights	4 (480)	6 (623)	10 (806)	12 (850)
Tractor power	20HP	25HP	35HP	50HP
Depth adjustment	Top link / drawbar			
Dimensions l x w x h (cm)	105.5 x 115.0 x 108.5	105.5 x 157.0 x 108.5	105.5 x 199.0 x 108.5	105.5 x 241.0 x 108.5



VREDO

Super Compact

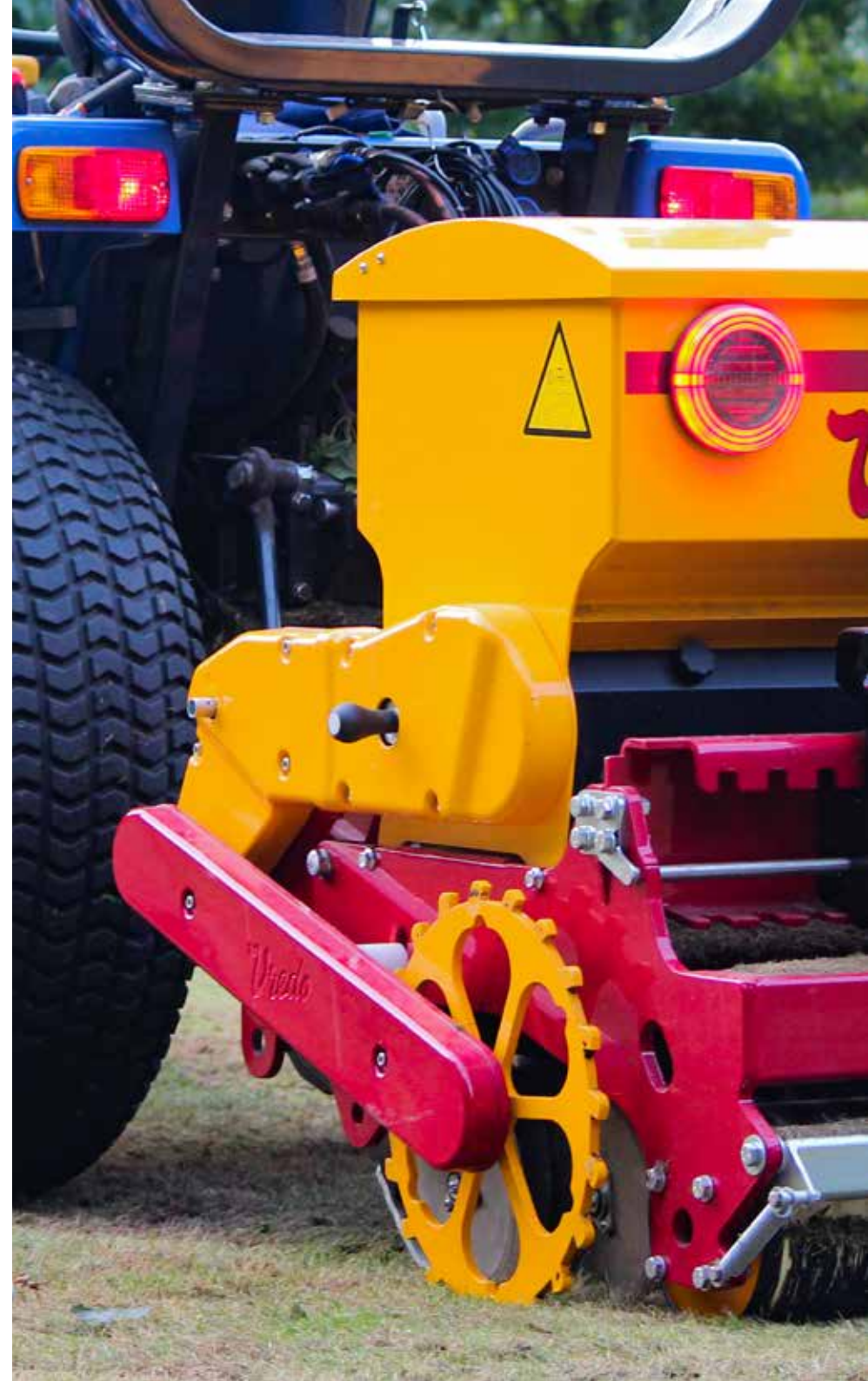
Due to the unique action of the Vredo seed application, the grass seed is placed in direct contact with the soil, giving almost total seed germination. A double row of discs give 35mm seed spacing, meaning that one-pass operation will generally suffice with no disruption to play even on fine turf. 5 models of the Super Compact Series are available, each as a 3-point linkage mounted option or towed with its own hydraulic lift frame.

Specification

Seed dosage	Stepless	3 to 190 kg/ha
Disc diameter	Ø 250 mm	
Element	Progressively sprung	0-20 mm sowing depth
Turf guard	Adjustable	
Pressure roller	Ø 220 mm with self-adjusting scraper	
Calibrating	Calibration table newly improved calibration tray section	

Model	DZ5 100(T)	DZ5 140(T)	DZ5 180(T)	DZ5 220(T)
GPS working width	94.5cm	140cm	182cm	224cm
Transport width	115cm	157cm	199cm	241cm
Row spacing	0.35cm	0.35cm	0.35cm	0.35cm
Volume of seed hopper	165 litre	235 litre	303 litre	375 litre
Weight	540kg	693kg	846kg	1000kg
Recommended 20kg weights	10 (740)	14 (973)	18 (1,206)	22 (1,440)
Tractor power	30 HP	30/40 HP	40/50 HP	50/60 HP
Depth adjustment		Top link / drawbar		
Dimensions l x w x h (cm)	123.4 x 115.0 x 108.4	123.4 x 157.0 x 108.4	123.4 x 199.0 x 108.4	123.4 x 241.0 x 108.4

(T) Wheel set and drawbar assembly, 205 kg extra weight and adding 175.5 cm to the machine's length





VREDO

Every Seed Counts!

Prevent expensive seed waste: Vredo makes every seed count! The ownership of a VREDO overseeder is an investment that will repay itself in a very short amount of time. By placing the seed into the ground instead of merely broadcasting it on top of it, you make the best use of your grass seed, which makes your grass lush and green in no time. Other "overseeders" are probably cheaper to buy, but are much more expensive in everyday use and in the long run.







If you have any questions or require more information don't hesitate to get in touch,
simply call +44 (0)1260 224568, email info@campeyturfcare.com or visit www.campeyturfcare.com

 CampeyTurfCare  CampeySportsTurfMachinery  CampeyMachinery  CampeyTurfCare

Distributed by:



Hong Kong | Singapore | Malaysia | Australia

Email: info@centaur-asiapacific.com

Website: www.centaur-asiapacific.com

