



# Magellan®

## Fully systemic, residual *Pythium* & *Phytophthora* Prevention

### Product Overview

MAGELLAN® is a targeted oomycete fungicide containing 800 g/kg of the active ingredient fosetyl aluminium. It is specifically registered for the control of *Pythium* diseases in golf, bowling greens and other intensively managed turf situations as well as Crown and Root Rot (*Phytophthora* spp.) in ornamental plant situations.

MAGELLAN® is a high quality water dispersible formulation. It has minimal odour, disperses in water very well and stays in solution for a long period of time. As a result, MAGELLAN® mixes completely with water and may be tank mixed with many commonly used fungicides and liquid fertilisers.

### Mode of Action

**GROUP 33 FUNGICIDE**

Fosetyl aluminium, the active ingredient in MAGELLAN®, is a true systemic fungicide which is rapidly taken up by the plant and transported both upwards (acropetally) and downwards (basipetally) in the cells. Fosetyl aluminium inhibits spore germination and penetration of pathogens into the plant by blocking its mycelial growth and spore production. Fosetyl aluminium also enhances the plant's own natural defence system against diseases. The mode of action is multi-site.

### How to get the best results from Magellan®

MAGELLAN® should be used preventively for the control of *Pythium* and *Phytophthora* diseases. Begin applications before symptoms occur when conditions first favour disease and continue applications on a 14 – 21 day application program whilst conditions remain favourable for disease development.

Always mix other products in the spray tank with water before adding MAGELLAN®. Adding MAGELLAN® last will avoid most product incompatibilities.

DO NOT mix MAGELLAN® with copper-containing fungicides or fertilisers.

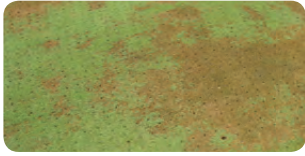
### Use Rates

Pathogen	Application Rate	Water Rate	Potential Tank Mix Partners
Pythium Leaf Blight	125 g/100 m <sup>2</sup> or 12.5 kg/ha	Apply as a foliar in 5-10 L of water /100 m <sup>2</sup> (500 –1,000 L per hectare)	Compass®, Cavalry® Weatherguard for inside – out protection. Foursome for improved plant benefits
Pythium Root Rot	125 g/100 m <sup>2</sup> or 12.5 kg/ha	>1,000 L/ha. Irrigate with 6 to 10 mm quickly after application	Triumph® – for curative and preventative protection
Seedling Damping Off ( <i>Pythium</i> spp.)	125 g/100 m <sup>2</sup> or 12.5 kg/ha	Apply as a foliar in 5-10 L of water /100 m <sup>2</sup> (500 –1,000 L per hectare)	Captan® – for enhanced brown patch and pythium protection
Crown & Root Rot	90 g/100 L of water or 10 g/m <sup>2</sup>	Apply as a soil drench at intervals of 6 weeks	Chief® Aquaflor, Cavalry® Weatherguard.



# Magellan®

## Diseases Controlled by Magellan®



Pythium Leaf Blight



Pythium Root Rot



Seedling Damping Off



Crown and Root Rot

## More about *Pythium* Turf Diseases

Fungi from the *Pythium* genus are soil borne plant pathogens capable of causing different diseases on a range of turfgrasses. *Pythium* spp. can be a disease to both seedling and mature turfgrass swards. *Pythium aphanidermatum* and *Pythium ultimum* are the two most predominant turf infecting species.

The first symptoms of *Pythium* blight are circular reddish brown spots in turf, ranging in size from 2.5 - 15 cm. In the morning dew, infected leaf blades appear water soaked and dark, may feel slimy and often mat together. As they dry, the leaf blades shrivel and turn reddish brown. On humid nights when dew form, you may see mycelium on the outer margins of the spots the next morning. The mycelium may remain active and visible far into the day, as long as there is plentiful moisture on the plant. The infected grass plants collapses quickly. If temperature and relative humidity remain high, the spots may coalesce, and large areas of turf can be lost.

Both species of *Pythium* survive as a saprophyte in the thatch, soil or both. When conditions are favourable, the disease invades roots as well as plant tissue and spreads from plant to plant via active mycelial growth. *Pythium* is a 'water mould' and survives well in waterlogged soils or on debris in ponds. *Pythium* can occur year round, however the disease is most severe when temperatures and relative humidity is high. Nutter et al found in 1983 that *Pythium* infection was likely to occur when 1) a maximum daily temperature was higher than 30°C, 2) followed by at least 14 hours of relative humidity greater than 90%, provided the minimum temperature was higher than 20°C More recent work undertaken by Shane in 1994 modified Nutter et al findings to the following infection requirements; 1) a maximum daily temperature was higher than 27.7°C, 2) followed by at least 9 hours of relative humidity greater than 90%, provided the minimum temperature was higher than 20°C.

## Features and Benefits

Features	Benefits
Quality Formulation	Has minimal odour, disperses in water very well
Proven plant health benefits	Improves plant health by reducing oxidative stress, improves root development
No documented history of resistance	Can be used throughout the season with confidence
Upwards and downwards systemic activity	Easy to use and apply, regardless of weather conditions
Effective in conjunction with Foursome Pigment in turf	Useful combination with Foursome for improved aesthetic and plant performance in summer. This mixture allows you to dial up or down your pigment rates to better suit your individual requirements
Non scheduled chemistry	Few restrictions around fungicide timing and requirements.

### Distributed by:



[www.centaur-asiapacific.com](http://www.centaur-asiapacific.com)  
[info@centaur-asiapacific.com](mailto:info@centaur-asiapacific.com)

\*Hong Kong, Macau, Singapore, Malaysia & Vietnam.

© Registered trademarks of an Adama Agricultural Solutions.  
\* Registered trademarks.

Please note: This information is not intended to replace the product labels. Always read the complete product label appearing on the container before opening or using products. Product labels also available at [adama.com](http://adama.com).

**ADAMA**  
Simply. Grow. Together.

[adama.com](http://adama.com)

